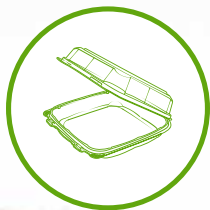




Strawberry Packaging

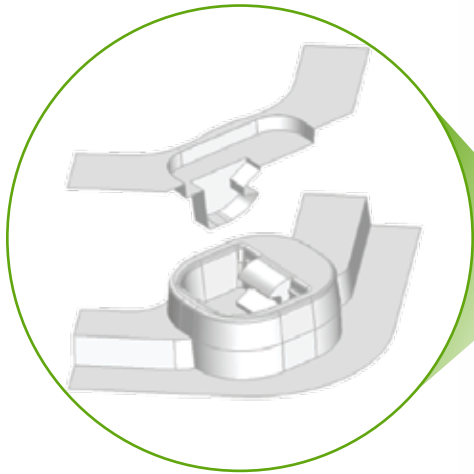


PET Containers

Pactiv's PET clamshells provide a strong, stackable and efficient vented packaging solution, guaranteed to give your strawberries that freshly-picked experience.

Entice your customers with your always reliable, innovative and superior quality clamshell packaging.



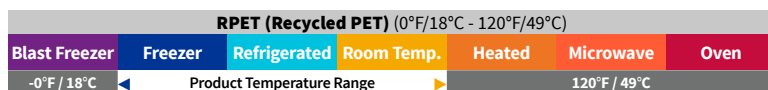


Introducing Pactiv's NEW Retractable Lock design

- ▶ Introducing Pactiv's new Retractable Lock design which offers locking functionality in a wide range of gauges!
- ▶ Currently available on our YYA9772 1 LB container
- ▶ Made in the USA with Post-Consumer Recycled Materials!
- ▶ High PCR material blend utilized in production process reducing the environmental impact by recycling materials previously destined for landfills.

PET Hinged Lid Clamshells

Product Number	Description	Dimensions (in.) Top Out	Vertical Depth (Closed)	Case Cubed	Case Pack	Cases / Pallet	Cases / Truckload
YYA9772	1Lb Strawberry APET Clamshell 360/Cs	7 3/8 x 4 7/8	3 1/2	2.852	360	36	1,080
YA9762	1Lb APET Hinged Berry Basket 400/Cs	7 3/8 x 4 7/8	3 3/8	4.279	400	24	720
A9776	1-Lb Long Stem Strawberry	7 11/32 x 9 5/16	2 7/16	3.477	128	30	900
MA9775	1Lb Strawberry Clamshell Smoothwall	4 3/4 x 7 3/8	3 1/4	4.219	352	24	720
A9728Z	2Lb / 8 Down Apet Clamshell	11 x 9 1/2	3 1/16	2.626	200	40	1,200
A9784	2 Lb. Clear Berry Clamshell	9 1/4 x 7 1/4	3 3/8	4.7	180	24	780
A9783Z	3 Lb Strawberry Apet Clamshell 120/Cs	11 1/4 x 7 5/32	3 1/2	3.983	120	24	720



These guidelines are supplied to assist you in determining the proper use of Pactiv products. They are based upon testing and published guidelines and are reliable in most applications. However, because every food supplier's recipes, ingredients, processes and supply chain is unique, these guidelines are not a substitute for product testing. Confirmation of product acceptability under your specific conditions of use must be done by you.